

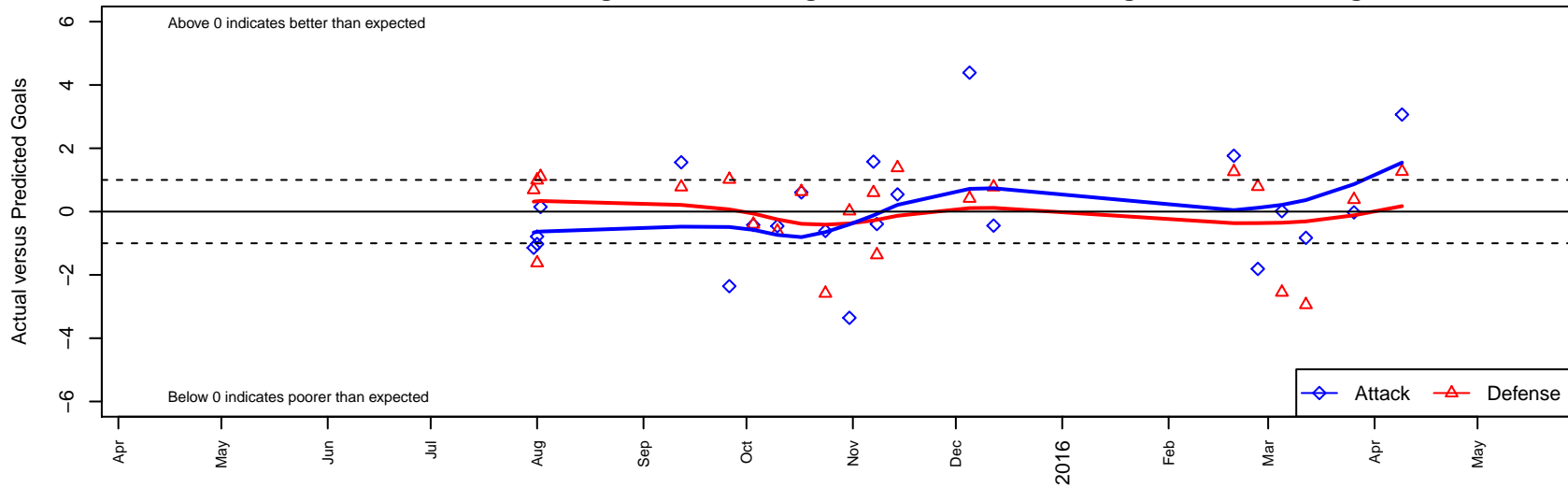
# Granite Falls Thunderbirds G01

Granite Falls Youth SC  
 Granite Falls, WA  
 G01 total strength=842  
 attack=1.62 defense=0.83  
 fall league = NPSL Div 3 U14  
 spr league = Spr NPSL Div 2 U14

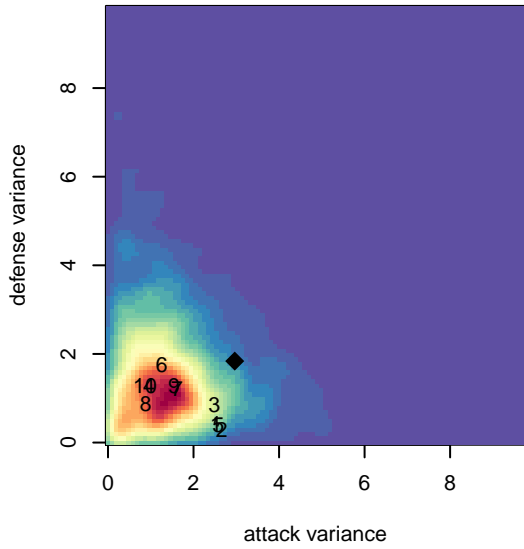
alt names used:  
 Granite Falls Thunderbirds G01  
 Granite Falls Thunderbirds

Venues played:  
 2015 Strawberry Classic GU14  
 2015 NPSL Division 3 U14  
 2015 Spr NPSL Division 2 U14

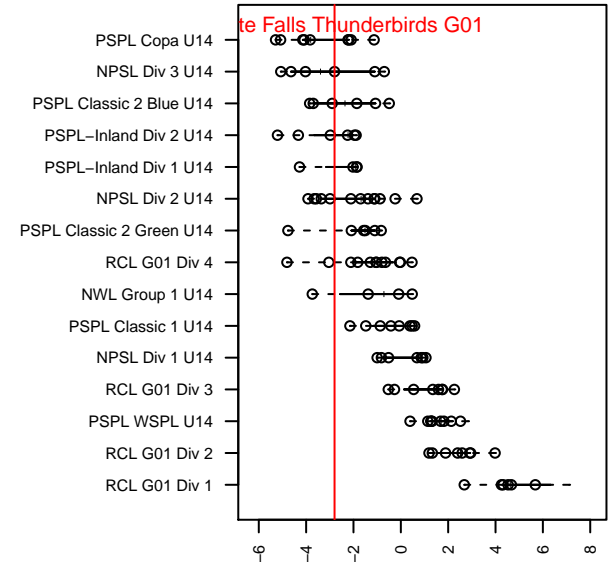
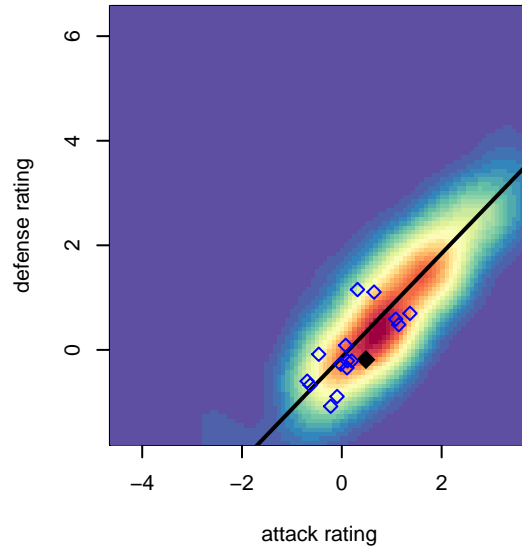
**Granite Falls Thunderbirds G01**  
 Dots are actual minus expected GF (blue circles) and GA (red triangles).  
 Blue line is smoothed change in attack strength. Red is smoothed change in defense strength.



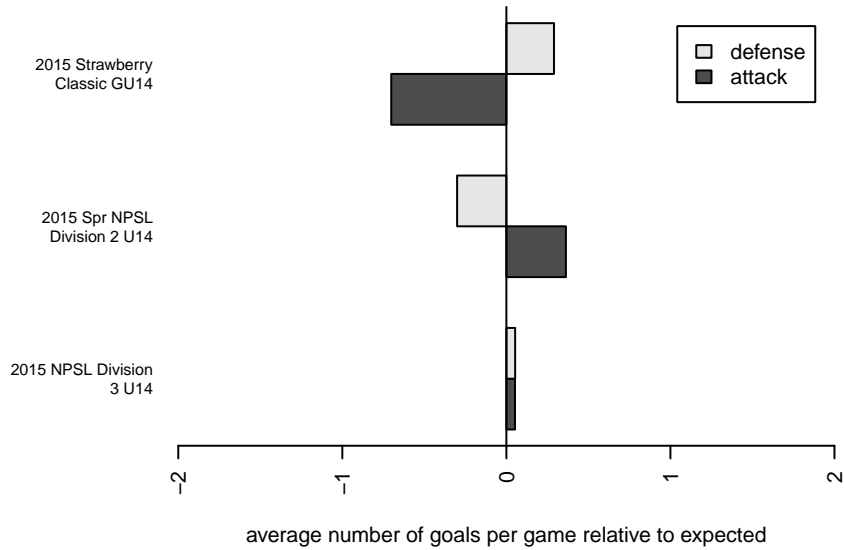
**attack and defense variance (black dot)  
relative to other teams  
and top 10 in region**



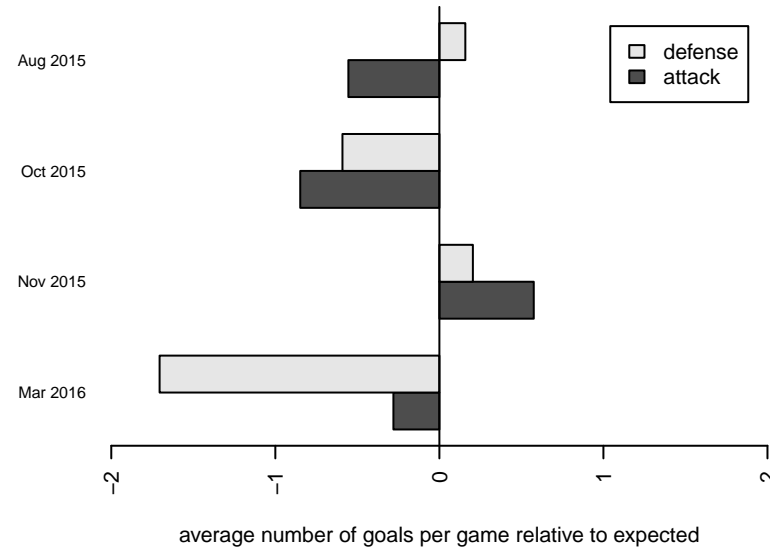
**attack and defense rating  
relative to others at age  
and all opponents in last 13 months**



**Performance relative to 13 month average**



**Performance relative to 13 month average**



date	home		away		venue	pred.home	pred.away
2016-04-09	Whatcom FC Rangers White G01	0	Granite Falls Thunderbirds G01	5	2015 Spr NPSL Division 2 U14	1.27	1.94
2016-03-26	Granite Falls Thunderbirds G01	2	Snohomish United Red G01	1	2015 Spr NPSL Division 2 U14	2.02	1.38
2016-03-12	Granite Falls Thunderbirds G01	0	MIFC Thunder G01	7	2015 Spr NPSL Division 2 U14	0.83	4.06
2016-03-05	Granite Falls Thunderbirds G01	1	Kent United White G01	6	2015 Spr NPSL Division 2 U14	0.99	3.45
2016-02-27	Bremerton United G01	0	Granite Falls Thunderbirds G01	1	2015 Spr NPSL Division 2 U14	0.79	2.81
2016-02-20	Mukilteo Rush G01	0	Granite Falls Thunderbirds G01	3	2015 Spr NPSL Division 2 U14	1.26	1.24
2015-12-12	Granite Falls Thunderbirds G01	1	Crossfire Select Fleming G01	0	2015 NPSL Division 3 U14	1.44	0.78
2015-12-05	Granite Falls Thunderbirds G01	6	Blue Bombers G01	1	2015 NPSL Division 3 U14	1.61	1.42
2015-11-14	Silver Lake SC Blueberries G01	1	Granite Falls Thunderbirds G01	1	2015 NPSL Division 3 U14	2.38	0.46
2015-11-08	BYSC Select Cambell G01	3	Granite Falls Thunderbirds G01	0	2015 NPSL Division 3 U14	1.63	0.39
2015-11-07	Granite Falls Thunderbirds G01	4	Seattle United NE White G01	0	2015 NPSL Division 3 U14	2.42	0.60
2015-10-31	MIFC Hurricane G01	1	Granite Falls Thunderbirds G01	0	2015 NPSL Division 3 U14	1.02	3.36
2015-10-24	Blue Bombers G01	4	Granite Falls Thunderbirds G01	1	2015 NPSL Division 3 U14	1.42	1.61
2015-10-17	Granite Falls Thunderbirds G01	1	BYSC Select Cambell G01	1	2015 NPSL Division 3 U14	0.39	1.63
2015-10-10	Granite Falls Thunderbirds G01	0	Silver Lake SC Blueberries G01	3	2015 NPSL Division 3 U14	0.46	2.38
2015-10-03	Seattle United NE White G01	1	Granite Falls Thunderbirds G01	2	2015 NPSL Division 3 U14	0.60	2.42
2015-09-26	Granite Falls Thunderbirds G01	1	MIFC Hurricane G01	0	2015 NPSL Division 3 U14	3.36	1.02
2015-09-12	Crossfire Select Fleming G01	0	Granite Falls Thunderbirds G01	3	2015 NPSL Division 3 U14	0.78	1.44
2015-08-02	Granite Falls Thunderbirds G01	2	North Whidbey Islanders G01	0	2015 Strawberry Classic GU14	1.85	1.10
2015-08-01	Granite Falls Thunderbirds G01	0	PSA Force G01	2	2015 Strawberry Classic GU14	0.79	2.99
2015-08-01	Granite Falls Thunderbirds G01	1	Snohomish United Red G01	3	2015 Strawberry Classic GU14	2.02	1.38
2015-07-31	Granite Falls Thunderbirds G01	3	CSC Velocity White G01	0	2015 Strawberry Classic GU14	4.14	0.69